



China's Import Restrictions and California

Zoe Heller

Assistant Director, Policy Development

CalRecycle

3/20/18



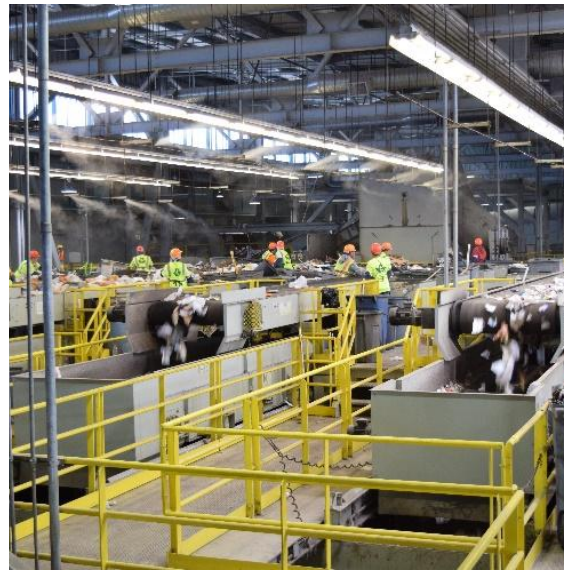
What Does Recycling Mean in CA?

Through the Eyes of
the Public



What the Consumer
Sees

Through the Eyes of
the Industry and Local
Government



What Actually Happens

Through the Eyes of
the Law



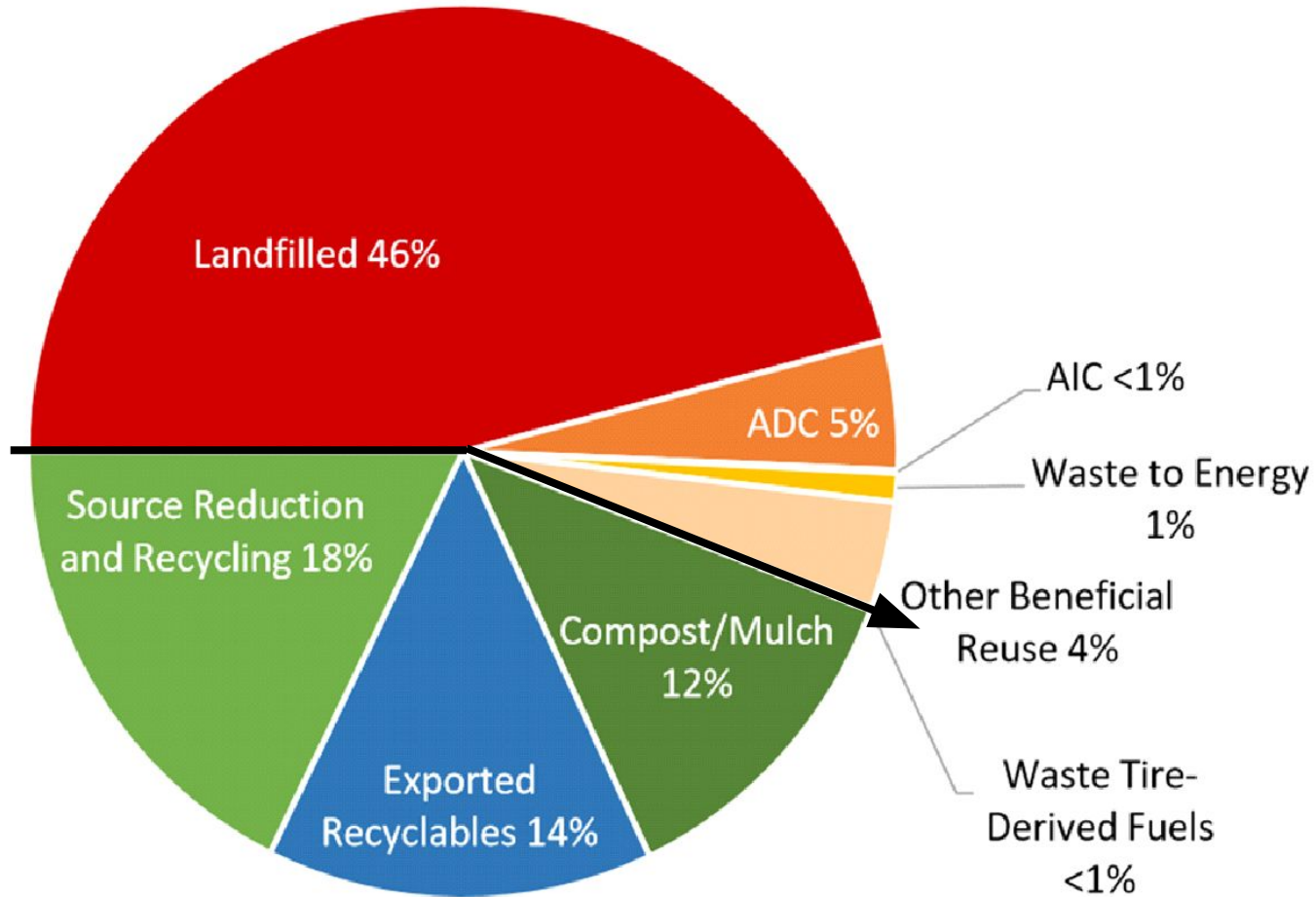
The Driving Force

What Does Recycling Mean?

Magic...



Recycling in California



Roughly 1/3 of all recycled waste is exported

Roughly 2/3 of what we toss in our blue bins is exported

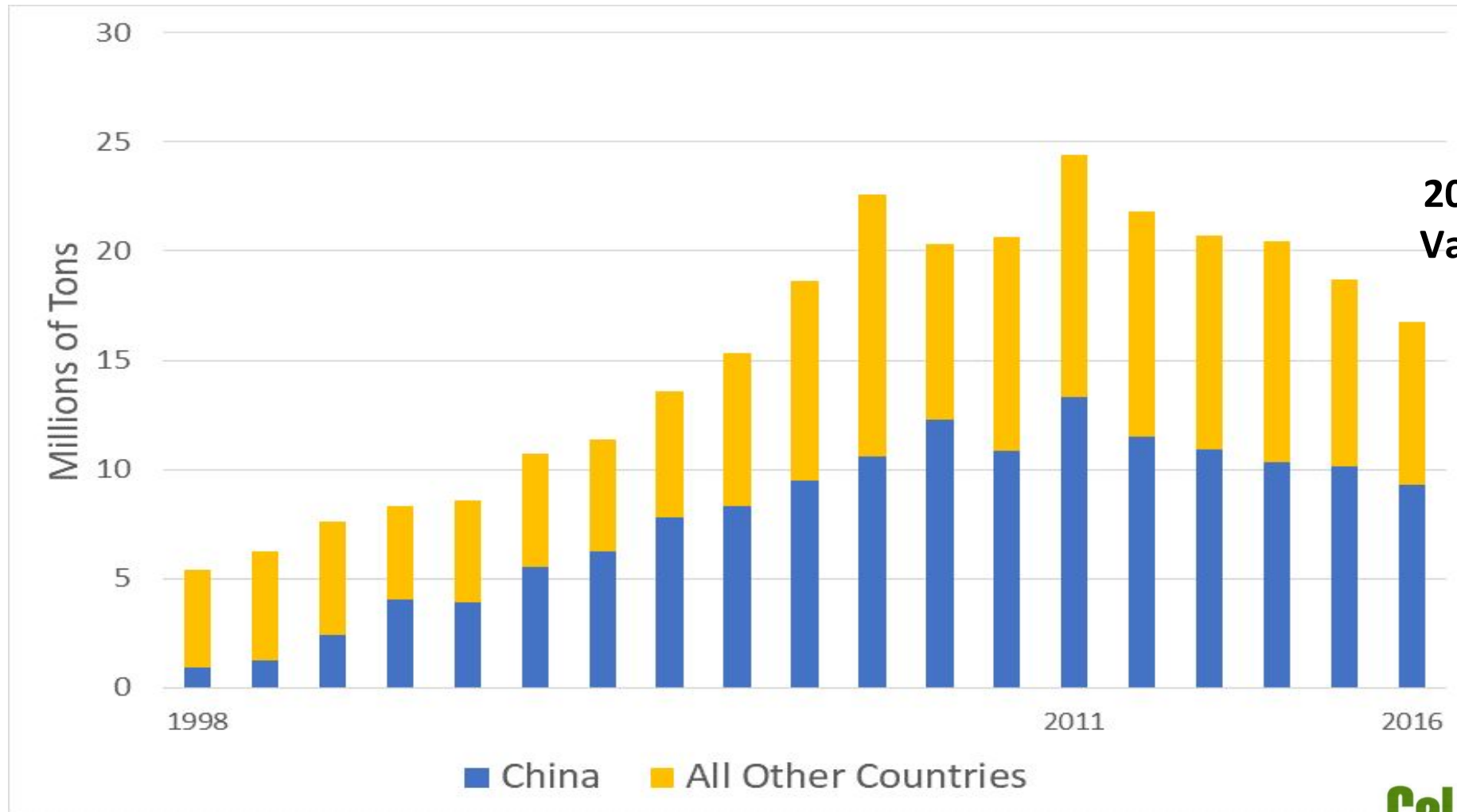
Estimated 76.5 million tons generated in 2016 – AB 341

Exports

- One quarter of all exports from California seaports are recyclable commodities
 - In 2016:
 - 15 million tons
 - Vessel value 4.6 billion

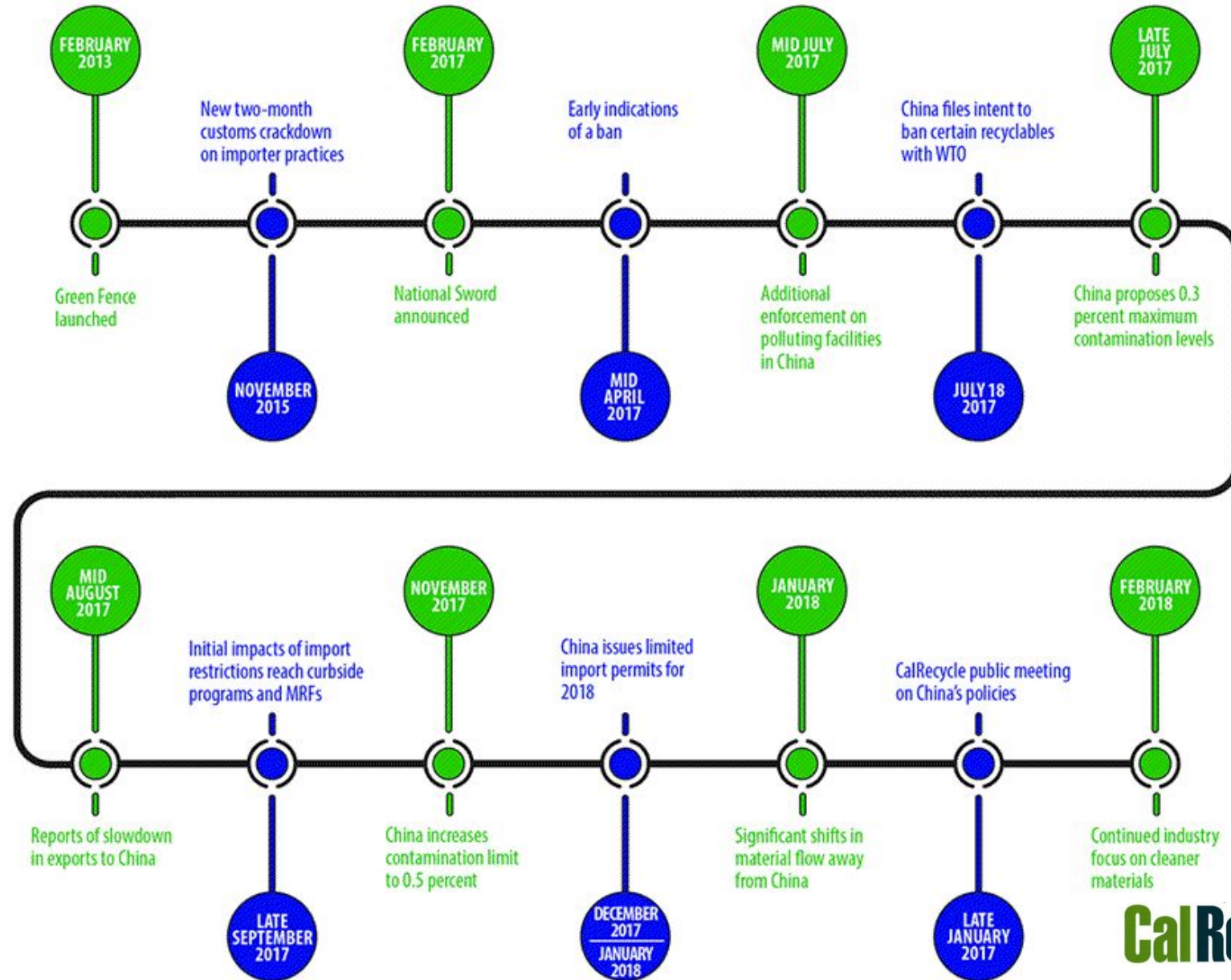


Exports Markets



**2016 Export Vessel
Value: \$4.58 Billion**

China's Policies



Impact on United States and California

- Challenging to move materials to markets
- Processing facilities are storing materials on-site, or landfilling previously recycled items
- Collection programs and facilities are doing what they can to reduce contamination



National Response

- In December, the Institute of Scrap Recycling Industries (ISRI), the National Waste & Recycling Association (NWRA), and the Solid Waste Association of North America (SWANA) submitted comments to the WTO
 - More specificity in the guidelines
 - Impact on global recycling markets
 - Delay in implementation of any import regulations
- In January, China published the final standards unchanged
- US Senators also sent a letter to the Chinese ambassador echoing industry comments

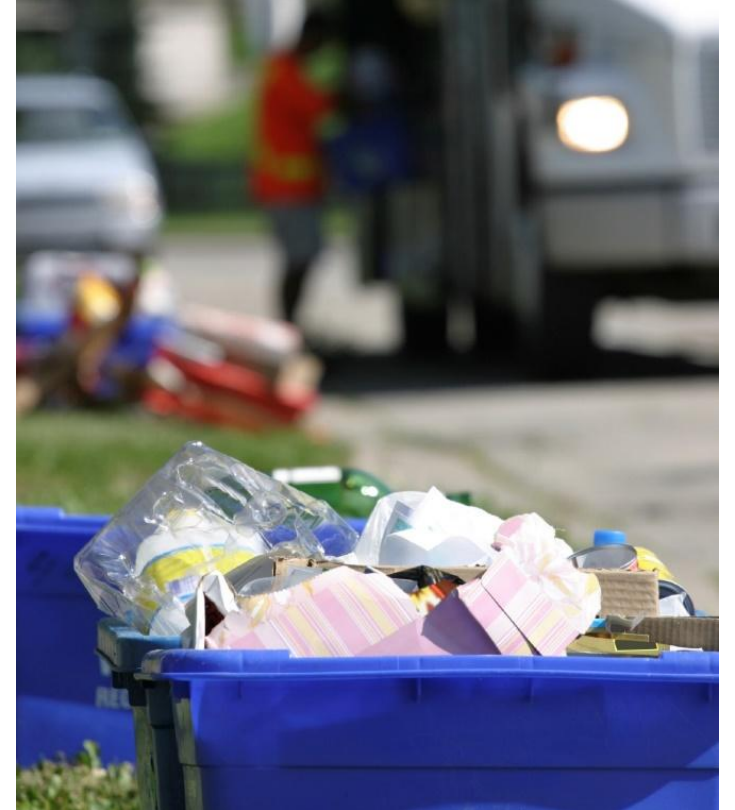
State Response



- Established webpage
- Coordinating with local enforcement agencies on permit conditions for material storage
- Coordinating with jurisdictions to share examples of local actions
- Packaging reform
- SB 1383 regulation development

Local Response

- Encouraging waste prevention
- Addressing collection and contamination
- Improving processing



Market Development Opportunities



- Greenhouse Gas grant and loan programs
- Recycling Market Development Zone loan program
- Partnerships with GO-Biz and tax incentive programs

THANK YOU

<http://www.calrecycle.ca.gov/Markets/NationalSword/>

Contact:

zoe.heller@calrecycle.ca.gov

exports@calrecycle.ca.gov

