



KELLY MCBEE

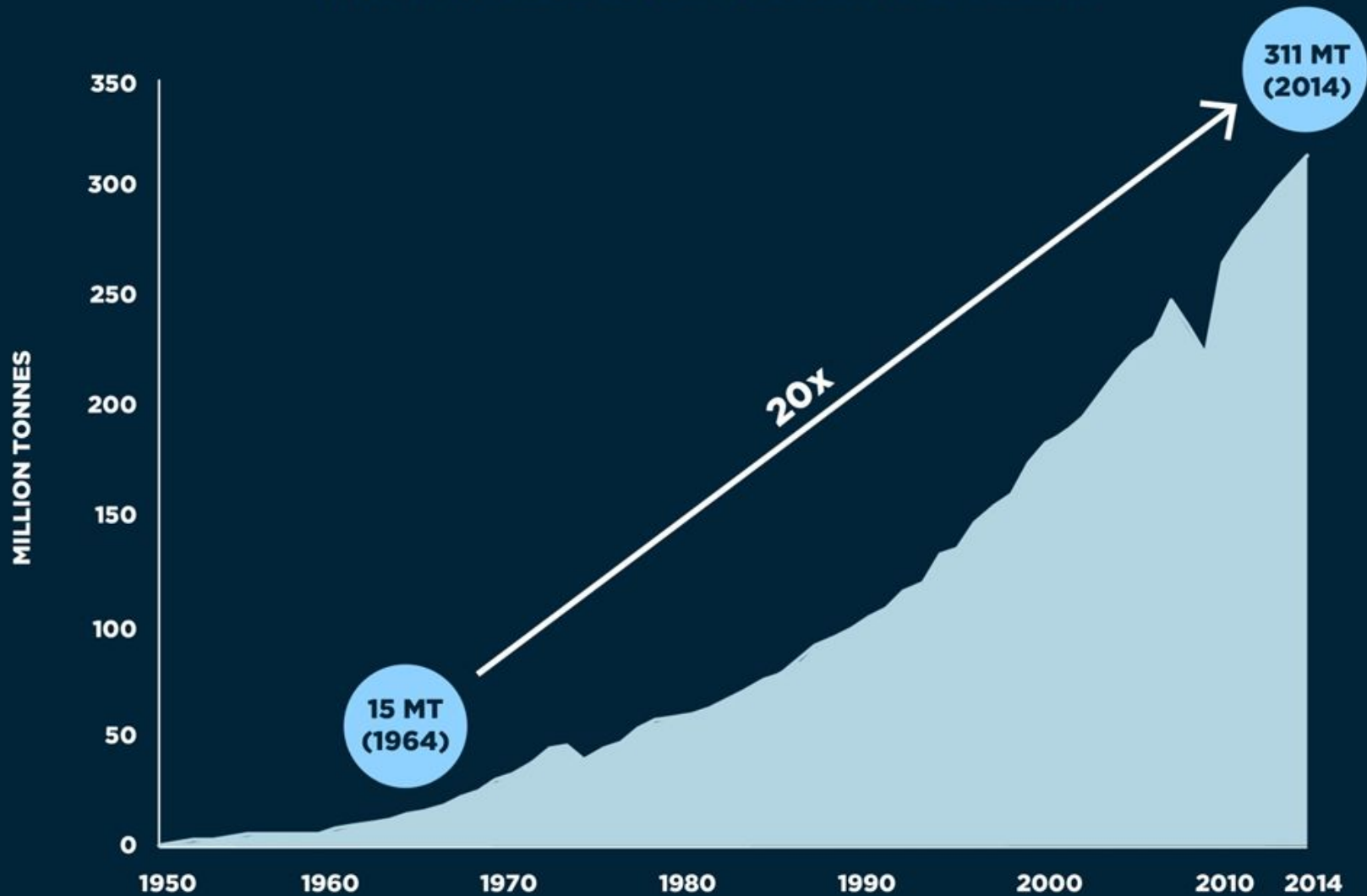
POLICY ANALYST, CALIFORNIANS AGAINST WASTE

Founded in 1977, **Californians Against Waste** is a non-profit environmental research and advocacy organization that identifies, develops, promotes, and monitors policy solutions to pollution and conservation problems posing a threat to public health and the environment.

ABOUT CAW



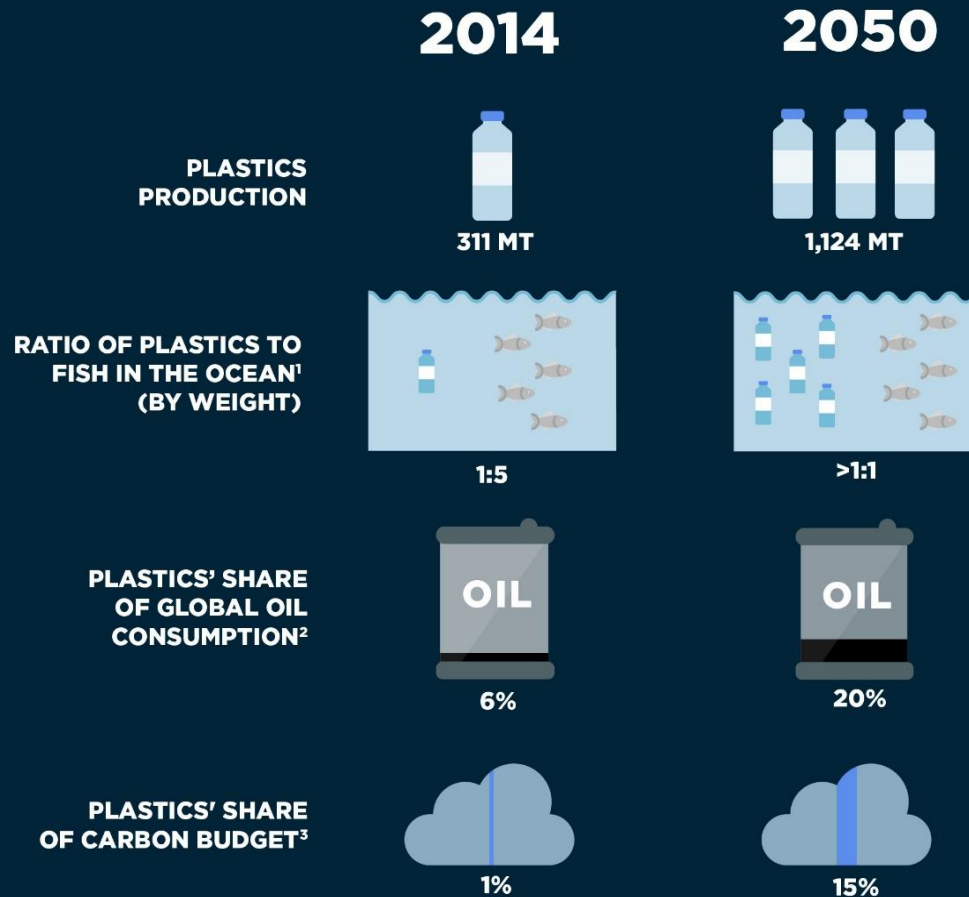
PLASTICS PRODUCTION INCREASED TWENTY-FOLD OVER THE LAST 50 YEARS



WORLD ECONOMIC FORUM, ELLEN MACARTHUR FOUNDATION, MCKINSEY & COMPANY,
A NEW PLASTICS ECONOMY: RETHINKING THE FUTURE OF PLASTICS (2016)
ELLENMACARTHURFOUNDATION.ORG/PUBLICATIONS

NOTE: Production from virgin petroleum-based feedstock only (does not include bio-based, greenhouse gas-based or recycled feedstock)
SOURCE: PlasticsEurope, Plastics - the Facts 2013 (2013); PlasticsEurope, Plastics - the Facts 2015 (2015).

WITH AN EXPECTED SURGE IN CONSUMPTION, NEGATIVE EXTERNALITIES RELATED TO PLASTICS WILL MULTIPLY



WORLD ECONOMIC FORUM, ELLEN MACARTHUR FOUNDATION, MCKINSEY & COMPANY,
A NEW PLASTICS ECONOMY: RETHINKING THE FUTURE OF PLASTICS (2016)
ELLENMACARTHURFOUNDATION.ORG/PUBLICATIONS

¹ Fish stocks are assumed to be constant (conservative assumption)

² Total oil consumption expected to grow slower (0.5% p.a.) than plastics production (3.8% until 2030 then 3.5% to 2050)

³ Carbon from plastics includes energy used in production and carbon released through incineration and/or energy recovery after-use. The latter is based on 14% incinerated and/or energy recovery in 2014 and 20% in 2050. Carbon budget based on 2 degrees scenario

Source: PlasticsEurope; ICIS Supply and Demand; IEA, World Energy Outlook (2015) (Global GDP projection 2013-2040 and Central 'New Policies' scenario oil demand projection 2014-2040, both assumed to continue to 2050); Ocean Conservancy and McKinsey Center for Business and Environment, Stemming the Tide: Land-based strategies for a plastic-free ocean (2015); J. R. Jambeck et al., Plastic waste inputs from land into the ocean (Science, 13 February 2015); J. Hopewell et al., Plastics recycling: Challenges and opportunities (Philosophical Transactions of the Royal Society B, 2009); IEA, CO₂ emissions from fuel combustion (2014); IEA, World Energy Outlook Special Report: Energy and Climate Change (2015); Carbon Tracker Initiative, Unburnable Carbon (2013).

Plastic pollutes at every stage of life:

From extraction

To production

To disposal



THE PROBLEM

**EIGHT MILLION TONS OF
PLASTIC END UP IN THE
OCEAN EVERY YEAR**

University of Georgia

THE PROBLEM

**MICROPLASTICS FOUND
IN QUARTER OF ALL FISH,
THIRD OF ALL SHELLFISH**

International Maritime Organization

THE PROBLEM

**94% OF U.S. DRINKING
WATER IS CONTAMINATED
WITH MICROPLASTICS**

OrbMedia

A PART OF **THE PROBLEM**

CA BOTTLE BILL CRISIS

- Low scrap values
- Mass closure of recycling centers
- Record low beverage container recycling rate
- 1.7 million beverage containers littered or landfilled every day

CALIFORNIA BOTTLE BILL



MODEL OF SUCCESS

More than 362 billion containers recycled and diverted from landfill or littering our public spaces



ENVIRONMENTAL PROTECTION

41 million tons of greenhouse gas emissions prevented—equivalent to saving nearly 96 million barrels of oil



ECONOMIC STIMULUS

\$1.6 billion to CA economy every year—more than \$300 million for California's recycling infrastructure



NATIONAL LEADERSHIP

The most successful recycling program in the US and the second largest in the world



JOB CREATION

More than 10,000 people directly employed in container recycling



CALIFORNIA VALUES

50 million containers recycled every day; 80 - 85% of all containers sold

A PART
OF **THE SOLUTION**

FIX THE CA BOTTLE BILL

- Financially support recycling centers
- Restore Plastic Market Development payments
- Revise outdated program provisions
- Refocus program dollars to provide recycling opportunities

BILLS FIGHTING PLASTIC POLLUTION

- **BOTTLE BILL FIX**
- **SB 168 (WIECKOWSKI) - MINIMUM RECYCLED CONTENT**
- **SB 1335 (ALLEN) - SUSTAINABLE FOOD PACKAGING**
- **AB 2379 (BLOOM) - MICROFIBERS**
- **AB 2779 (STONE/CALDERON) - CONNECT THE CAP**
- **AB 1884 (CALDERON) - STRAWS UPON REQUEST**

CONTACT



Office: 916.443.5422

kellymcbee@cawrecycles.org