

Retailers and Manufacturers Striving for Sustainability Goals

**Presented by:
Giri Veeramuthu
Director Quality
Assurance**

In the U.S., more than 81% of the materials that flow through our stores, clubs, and distribution centers is being diverted from landfills.....

Driving sourcing standards and social accountability

“As we advance our sustainability program, we believe reducing our impact on the environment is best achieved by both reducing the amount of energy we use in the creation of our delicious candies and by investing in our shared environment through appropriate carbon offsets,” Clarence Walsh, Director of Community and Administration.

CURRENT INITIATIVES

- The Conservation Fund and Garcia River Forest
- Offsetting Carbon footprint
- Carbon neutral for Scope 1 and 2 emissions (need data verified by 3rd Party)
- Renewable energy credits (wind farms 100%)
- Jackson Street Garden
- Zero Waste Gold
- Carpool Incentives

FUTURE PLANNING

- Reduce the clean water and Energy usage at both plants
- La Porte Community Garden across Row
- Zero Waste Platinum
- Conduct 3rd Party audit of carbon emissions data
- Packaging Sustainability Assessment Project

Carbon Emission Reduction Efforts. In 2016 we offset carbon emissions equivalent to . . .

**13,181,826
pounds of coal burned**



**1,390,008
gallons of gas consumed**



**1,304
homes energy use for a year**



Under the guidance of “In Good Company,” we are sending one associate to each of the below week long service trips .

MARCH

STANISLAUS NATIONAL FOREST
CALIFORNIA



JUNE

SOUTH BRONX
NEW YORK



AMERICAN LICORICE COMPANY

Three Rs



Three Rs

.....



Learnings

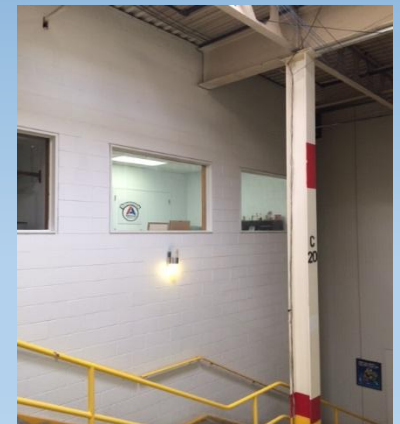
...

A Mountain Dew can and super rope film in the paper recycling!!!! This is a flagrant violation!!! I will be checking video unless someone comes forward.



Violation!

Leaving lights on Some people will never learn.



Waste Audits

.....

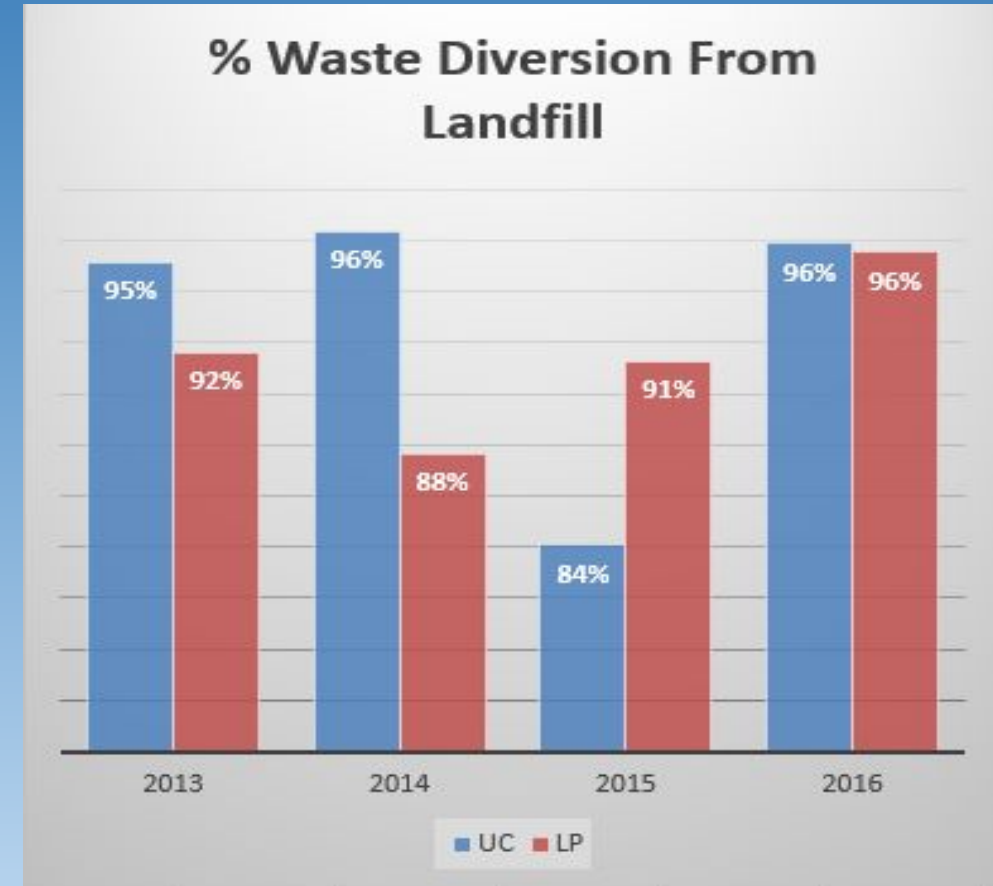
Could recycle
plastic

If plastic could
be rinsed

Please rinse
and use Mixed
plastic bins



Both locations achieved 96% diversion from landfill in 2016. This amounted to 1,715.2 metric tons of waste being diverted from our landfills, which is a 3% increase from 2015's 1,666.5 metric tons of waste.



Cambodia plant



4 Rs

Reduce, Reuse, Recycle and Rethink